



AugerConveyor AC Unit 6" to 12" Shaftless Screw



PEWE AugerConveyor Unit
Model AC-12
Complete with solids hopper, flanged
discharge and support stand.

PEWE Innovative Quality

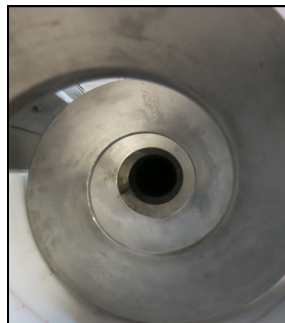
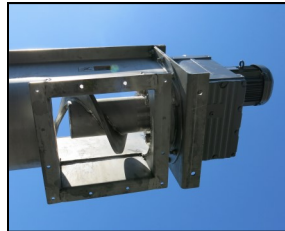
The PEWE premier line of **AugerConveyor AC units** cover a wide range of flow capacities. The unique technology built into each **AugerConveyor AC** screw system maximizes solids throughput capacity. With the replaceable UHMW wear surface the **AugerConveyor AC** achieves excellent longevity.

The complete PEWE product line includes screening systems, inclined plate settlers, DAF units, dewatering equipment and accessories. PEWE products and systems are designed in-house and produced under tight quality control. Support services are provided for product life.

PEWE is an innovative leading company in the field of industrial water and wastewater treatment systems. PEWE offers products worldwide to the Food, Petrochem, Pharma, Metals, Electronics, other industries and Municipal market.

PEWE AC Unit Technology

The heart of the screw technology behind the **AugerConveyor** is the precision spiral design. Based on physical principles, the design creates the specific conditions for conveying semi or solid material ranging from 20% to 65% total solids. The solids rise up the slick UHMW wear surface angled at the maximum 25 degree and discharge out the top mounted chute. This allows for 10, 20 and 30 cubic yard roll off dumpster to easily clear the chute. Guard covers protect the auger.



More Benefits:
AugerConveyor AC Unit

AugerConveyor AC Unit		
<u>MODEL</u>	<u>% UTILITY</u>	<u>CAPACITY</u>
6 inch Shaftless Screw		
AC-6	45	52 cfh
	95	108 cfh
12 inch Shaftless Screw		
AC-12	45	441 cfh
	95	932 cfh
All models designed 20% to 65% solids.		

PEWE Screw & Chassis System

The **AugerConveyor** screw and chassis is available in both AISI 304 stainless steel or corrosion resistant carbon coated steel. All units come with guard/covers, flanged discharge port, support framing and lifting lugs for easy positioning, hook-up and service access.

