



## Command Control®

Process Automation Systems



### PEWE Automation Ease

PEWE **Command Control**® automated systems ensure safe and efficient process and wastewater operations. We build custom controls and associated motor control centers delivering consistent performance and measurable results. Operators will find the standard color touch-screen and multi-lingual interface easy to navigate while providing a comprehensive system overview. Data will be readily available and timely.

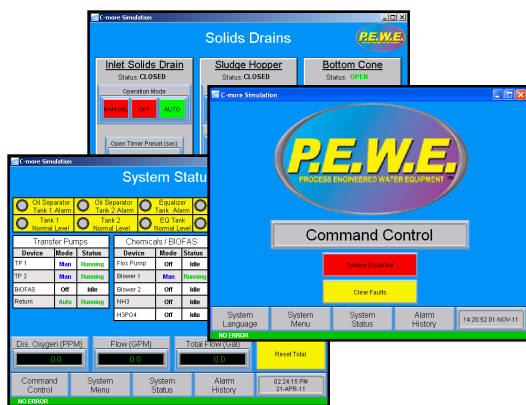
#### PEWE fully automated modular process systems:

- Process control/automation survey
- Process/instrumentation diagrams
- Electrical PLC panel design
- UL508 and CSA certification
- PLC and HMI programming
- Full state-of-the-art lab testing
- Field start-up and commissioning
- Process and HMI reporting
- Web based remote support

**Custom Quality by PEWE....**  
**When Experience Counts!**

### PEWE Architecture & SCADA Design

PEWE **Command Control**® products and systems are designed in-house and then produced under tight quality control. Using the latest CAD, programming software, non-proprietary technology and experience PEWE Command Control provides support for years. PEWE offers products worldwide to the Food, Petrochem, Pharma, Metal, Electronics, other industries and Municipal markets.



### Why Clients Use PEWE Command Control®

- Experienced technical services personnel
- NEMA 4 and corrosion resistant enclosures
- Industry proven components– Rockwell, Siemens
- State-of-the-art technology
- Operator friendly interface
- ISA standard labeling system