

Wastewater Treatment: Solids Screening

Effective removal of solids (TSS) yields sustainable environmental results. Stuart Ward of *Process Engineered Water Equipment* explains screening equipment is key...

Case Study

Pacific Natural Foods of Tualatin is known for soymilk, vegetable soups, free-range chicken broth and dairy as well as running its own meat processing plant- Dayton Natural Meats. It is primarily a red meat plant, and its poultry line, added in 2009, primarily produces chicken for soups. The facility is run to organic standards and built to a mid-sized, state-of-the-art processing facility. As a company that makes natural and organic foods, it seems only natural to consider the health of the environment. If you run things well from an environmental standpoint, wetlands filter water, cycle nutrients and provide valuable habitat for migratory birds and other wildlife. Bob Dickson, Dayton's manager believes this makes a better product in the long run.

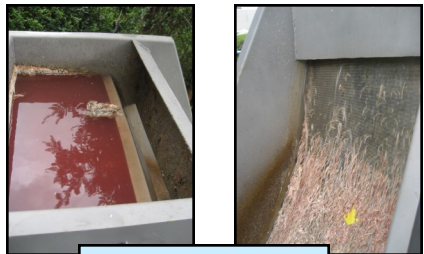
Solids Recovery

The old system was built for lower volumes of water and solids and had

The PEWE **SuperSkeen SSP-24** side-hill screen equipment was delivered on time and with installation technical support available to the maintenance crew. Soon all was in place and ready to go.



Field Installation



Efficient Solids Capture

Final Results

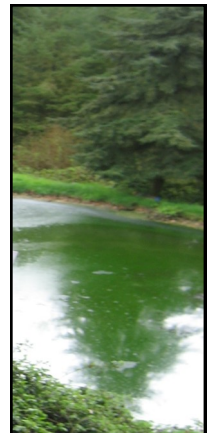
Upon start-up the new side-hill screen system yielded the desired results. The solids going to the pond were minimal. The screen flow was such that clean-up were handled very efficiently. The new stainless steel PEWE **SuperSkeen™** wedge-wire screen was easy to operate and keep clean by the staff.



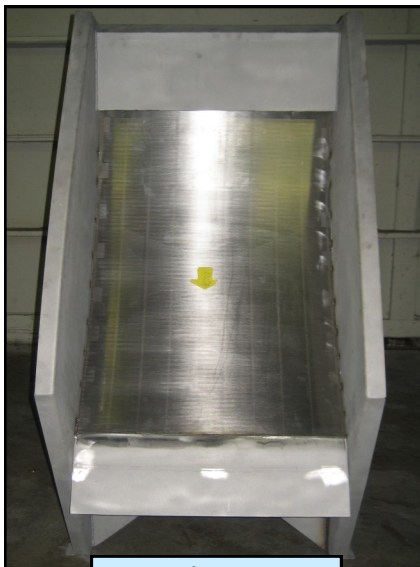
Wedgewire Screen

Pacific Natural Foods works closely with the Wetlands Conservancy and continue to rely on their guidance with ongoing restoration journey.

Pacific has been repairing wetlands areas on a multi-year restoration effort. There is already an influx of birdlife and being able to help keep the community clean while aiding the land and natural environment **Green**. Pacific Natural Foods couldn't be happier with the new wastewater screen



Wetland Pond



SuperSkeen SSP-24

many short-comings which needed to be addressed to achieve better treatment. PEWE determined that with correct screen sizing environmental sustainability was possible.



PEWE
PROCESS ENGINEERED WATER EQUIPMENT™

Quality Liquid/Solid Separation Systems
Screening, Gravity, Flotation, Dewatering & Accessories

SuperSkeen™
HD² XLRator™ DAF
Poly-E²™ Economy DAF
T²-Max Thickener™
OZ Oil/Water Separator™
PolyAccu Dose™
DeWater Systems™

Test Your Water
with the
HD² XLRator™ Pilot



Reduce
BOD
TSS
COD
FOG

PROCESS ENGINEERED
WATER EQUIPMENT

contact us today at: 360-798-9268 & www.pewe-usa.com