



LIQUID/SOLID SEPARATION SYSTEMS

SCREENING, GRAVITY, FLOTATION, DEWATERING & ACCESSORIES



PEWE's Vision of Raising the Standard



19215 SE 34th Street Suite 106-202 Camas, WA 98607

phone: (360) 798-9268

website: www.pewe-usa.com



LIQUID/SOLID SEPARATION SYSTEMS

SCREENING, GRAVITY, FLOTATION, DEWATERING & ACCESSORIES

PEWE Vision

Our clients will find with US Patents #8431022, #9962631 and #D827765, as well as twenty-four Trademark registrations, the PEWE product portfolio offers innovative process and wastewater treatment solutions as well as reuse opportunities. The PEWE research and development team is continuously active seeking new technologies for the Industrial and Municipal global markets.

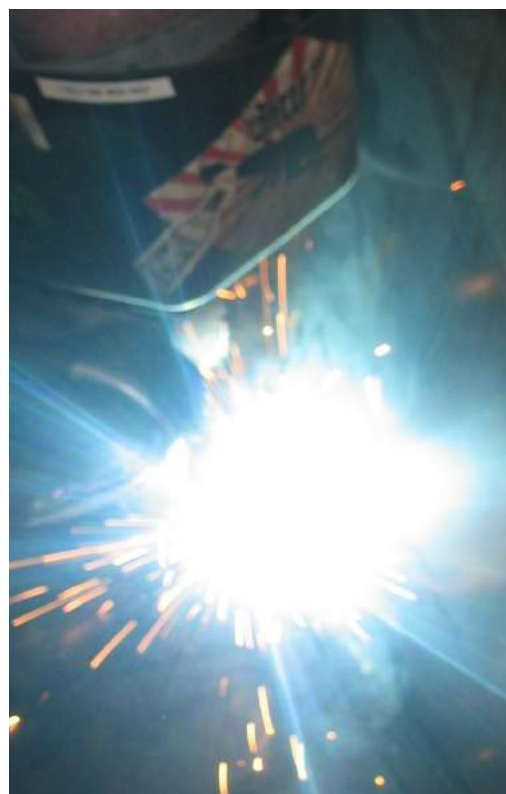
This allows PEWE to offer optimal package systems at the lowest cost, producing the highest revenue from your process and waste-stream. We design, manufacture, construct and warrantee our treatment systems.



PEWE Raises the Standard

Patent pending products and systems are designed in-house and produced under tight quality control standards. Systems are constructed in stainless steel, polypropylene and PVC for long-lasting durability and low maintenance. Detailed engineering design means operational ease and simple equipment care.

Some of the product features you will come to expect in your next system can be found only on a PEWE system. The unique technology built into PEWE systems, such as the HD2XLRator™ LS DAF (pictured), maximize TSS removal while minimizing chemistry usage and sludge production.



System design efficiency equals better performance at reduced operational life-cycle cost.

www.pewe-usa.com

Process Engineered Water Equipment

19215 SE 34th Street Suite 106-202 Camas, WA 98607

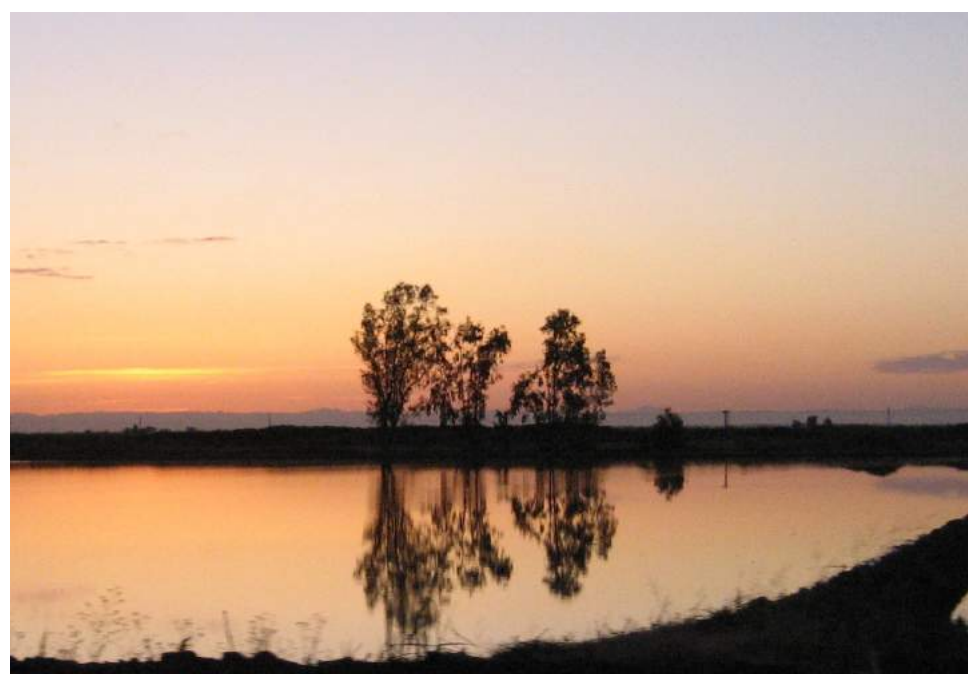
phone: (360) 798-9268

website: www.pewe-usa.com



LIQUID/SOLID SEPARATION SYSTEMS

SCREENING, GRAVITY, FLOTATION, DEWATERING & ACCESSORIES



Global Solutions for Municipal

PEWE Innovative Solutions

PEWE entered the market in 2007 as a manufacturer of dissolved air flotation systems and since has added screening, clarification, dewatering and other related treatment equipment to its product portfolio. PEWE holds US Patents #8431022 and #9962631 for DAF design as well as #D827765 for MBBR Media design, and 24 registered trademarks. This combination of PEWE's manufacturing expertise for wastewater equipment combined with exceptional customer service ensures customers well supported for many years. For complete details please refer to the PEWE website.



Product Groups

PolyAccu Dose® Chemical Stations

- LD Static Mix System
- PDC Active Blend Blade® System
- RGT High Volume System

G²-SEP® Plate Settler Clarifier

DeWater® Systems

- DBP Belt Press
- RDT Rotary Drum Thickener
- TRU Truck Receiving Unit
- CSP Compactor Screw Press

Dissolved Air Flotation

- Dueler® DAF
- HD²XL Rator® DAF
- Nx²JEM® DAF
- Poly-E²® DAF
- T²-MAX® DAF

Oil/Water Separator

- OZ® System
- OWS System

SuperScreen® Systems

- SSB Bar
- SSE External
- SSI Internal
- SSP Parabolic/Side-hill
- SSC Channel

Command Control® Panel

ASO® Bio-Carrier

- MBBR Media

Wastewater Pumps

- MAX RGT
- MAX TRS



www.pewe-usa.com

Process Engineered Water Equipment

19215 SE 34th Street Suite 106-202 Camas, WA 98607

phone: (360) 798-9268

website: www.pewe-usa.com



LIQUID/SOLID SEPARATION SYSTEMS

SCREENING, GRAVITY, FLOTATION, DEWATERING & ACCESSORIES

Pilot Test Systems



Global Solutions for RESOURCE



PEWE offers complete pilot testing of water and wastewater streams for the purpose of proofing for treatability. The pilot test systems are skid mounted for easy transportation, come with an experienced operator for set-up, trialing and return shipment. The pilots are a fully scaled version of their larger "brothers", are constructed in stainless steel and PVC for corrosion resistance, utilizes Rogue regenerative turbine aeration technology and is operated with the **PEWE Command Control®** systems.

Nx2JEM® AS Pilot Test DAF

The unique technology built into each **PEWE** DAF system maximizes TSS removal while minimizing chemistry usage and sludge production. Pilot testing provides management with the valuable data needed for making key design and return on investment decisions.



DeWater® DBP Press Test System

PEWE offers complete dewater testing of solids generated from wastewater and other process streams. The test filter press system is skid mounted for easy transportation and setup. An experienced Technician will provide for sludge preparation, operation of the equipment during the trial and packaging for return shipment. The test press is a scaled version of it's larger "brothers", is constructed in stainless steel for corrosion resistance and is operated with a simple variable speed/pressure control system.



MBBR Pilot Test System

PEWE offers complete pilot testing of water and wastewater streams for the purpose of proofing its treatability. The pilot test **MBBR** system is skid mounted for easy transportation, comes with an experienced operator for set-up, trialing and the return shipment. The **MBBR** pilot is a fully scaled version of it's larger "brothers", is constructed in stainless steel and PVC wetted parts for corrosion resistance, utilizes twin VFD driven regenerative turbine blower technology and is operated with the **PEWE** Control system.

www.pewe-usa.com

**Process Engineered
Water Equipment**

19215 SE 34th Street Suite 106-202 Camas, WA 98607

phone: (360) 798-9268

website: www.pewe-usa.com



LIQUID/SOLID SEPARATION SYSTEMS

SCREENING, GRAVITY, FLOTATION, DEWATERING & ACCESSORIES

Project References



<u>Client</u>	<u>Project Scope</u>	Global Solutions for FOOD PROCESS	<u>Client</u>	<u>Project Scope</u>
- Columbus Salame S. San Francisco, CA	Full turnkey system, <i>SuperSkreen</i> , <i>HD XLRator DAF</i> , <i>PolyAccu Dose</i> TSS, FOG, BOD		- Willamette Egg Canby, OR	Full turnkey system, <i>T-MAX DAF</i> , <i>PolyAccu Dose</i> , <i>DeWater System</i> TSS, BOD
- Seneca Foods Yakima, WA	<i>SuperSkreen SSE-24.2</i> FOG, TSS		- Hood River Juice Hood River, OR	Full turnkey system, <i>Bio LCM</i> system, <i>Poly-E DAF</i> , <i>PolyAccu Dose</i> TSS, BOD
- Seneca Foods Payette, ID	<i>T-MAX DAF</i> , <i>PolyAccu Dose</i> TSS, FOG, BOD		- Mead Johnson Mexico	Full turnkey system, <i>HD XLRator DAF</i> . TSS, FOG, BOD
- BrucePac Silverton, OR	Plug Flow Reactor, <i>MAX RGT</i> aeration <i>PolyAccu Dose</i> <i>SuperSkreen</i> TSS, FOG, BOD		- Dannon Co Portland, OR	Design/Build WWT system <i>HD XLRator DAF</i> , <i>PolyAccu Dose</i> TSS, FOG, BOD
- House of Raeford Nesmith, SC	<i>T-MAX DAF</i> , <i>PoluAccu Dose</i> TSS, FOG, BOD		- Rumiano Cheese Crescent City, CA	<i>MBBR System up-grade</i> Media replacement BOD, N, P
- Oregon Ice Cream Eugene, OR	Full turnkey system, <i>HD XLRator DAF</i> , <i>PolyAccu Dose</i> , custom EQ tank TSS, FOG, BOD		- Ehrman Dairy Casa Grande, AZ	Full turnkey system, <i>HD XLRator DAF</i> , <i>PolyAccu Dose</i> , <i>Dewater Press</i> TSS, FOG, BOD
- Amerities South Hope, AR	Full turnkey system, <i>BIO LCM</i> System <i>T-MAX DAF</i> , <i>PolyAccu Dose</i> FOG, TSS, BOD		- Newburgh Egg Newburgh, NY	<i>MBBR System</i> , <i>Command Control</i> <i>PolyAccu Dose</i> , custom tanks TSS, FOG, BOD
- Odom's Pride Dickson, TN	Full turnkey system, <i>HD XLRator DAF</i> , <i>PolyAccu Dose</i> , custom EQ tank TSS, FOG, BOD		- Pacific Natural Foods Tualatin, OR	<i>HD XLRator DAF</i> , <i>PolyAccu Dose</i> , TSS, FOG, BOD
- Matosantos San Juan. PR	<i>T-MAX DAF</i> , <i>PolyAccu Dose</i> FOG, TSS, BOD		- GEM State Burley, ID	<i>Rogue MAX RGT DAF</i> upgrade TSS. FOG, BOD
- Laresen's Creamery Clackamas, OR	Custom EQ tank Flow & Load			

www.pewe-usa.com

**Process Engineered
Water Equipment**

19215 SE 34th Street Suite 106-202 Camas, WA 98607

phone: (360) 798-9268

website: www.pewe-usa.com